

How to Backup your Racepak logs

This session was done on Windows 7. Vista is almost identical while XP is different in look, the key elements are the same.



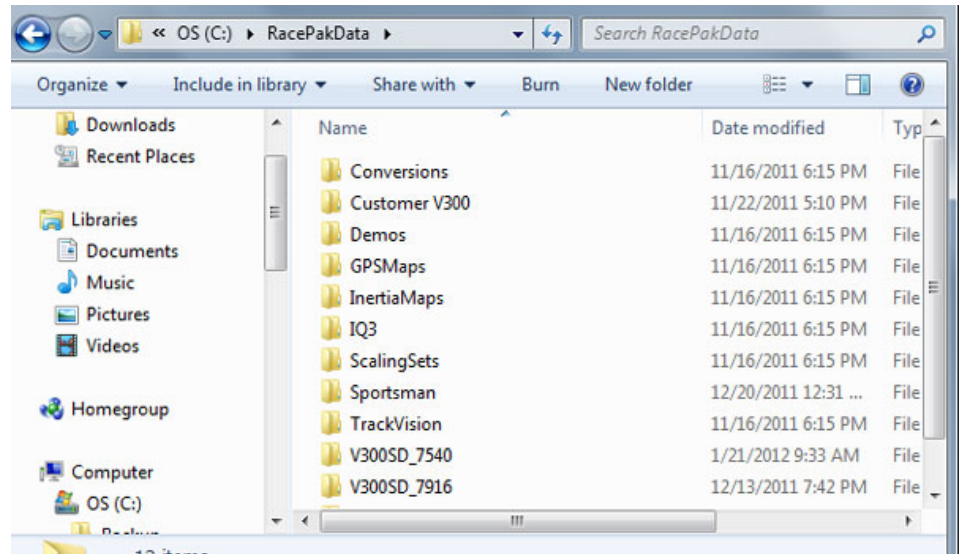
Step 1. Get a thumb or flash drive from an office supply store. The one in the pic I got at Staples for \$6.

Yes you can backup to a CD/DVD, another computer on a network or a SD card – NOT your Racepak SD card. But I think the thumb drive is best.

For the more IT aware guys a lot takes about 1mbper log (with a 200 second record time)

Step 2 navigate to the Racepak folder

1. Single Left Click on the Start button on the bottom left of your windows screen
2. Single Left Click on Computer
3. Single Left Click on C:
4. You may have to scroll down to find RacePakData



5. Double Left Click on RacePakData
6. If you have a V300 there will be a folder visible named V300SD_xxxx (with xxxx being your serial number)
7. If you have a Sportsman there will be a folder visible named Sportsman
8. Single Right click on the v300 or sportsman folder
9. Single Left Click on Copy



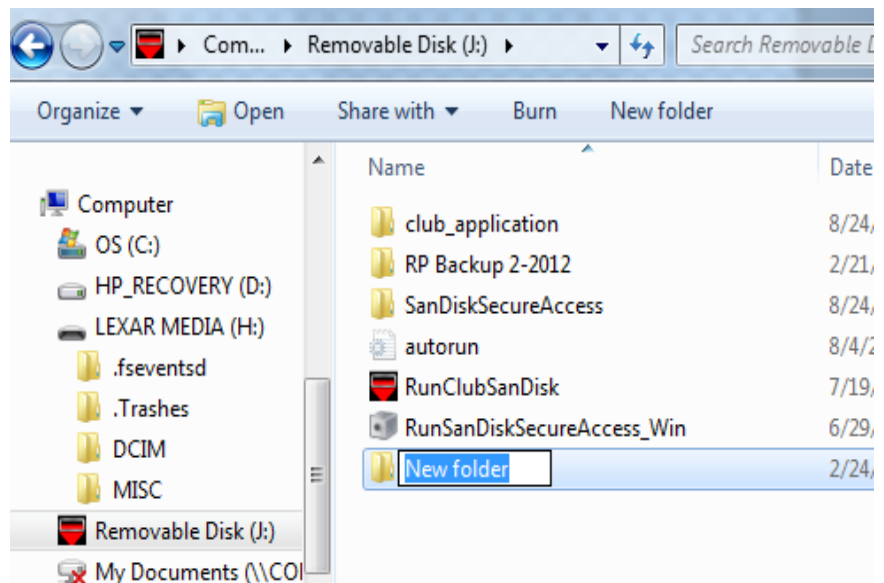
Step 3

Insert the thumb drive in a USB port and a window like this will pop up.

1. Left click on the selection "Open Folder To View Files" selection. This will pop open a window like that shown in step 4.

Step 4

1. Create a new folder called RP backup xxxxx with xxxxx being the date. You do this by right clicking in the white area and selecting NEW and then FOLDER. That will give you the highlighted New Folder where you type RP backup 2-20-12 (you must use dashes not slashes)
2. Press the enter key to finalize the new folder with your name.
3. Right click on your new folder which will give you some choices - single left click paste.



You can right click on your new folder and explore/view your logs to verify the copy worked.

Questions? Call Greg Kelley 609-265-2110



